

Report states on IoT networks

Benefits

Report states and alarms on IoT networks

Control relays through IoT networks

Typical Applications



Door opening detection
Presence detection
Brightness detection
...

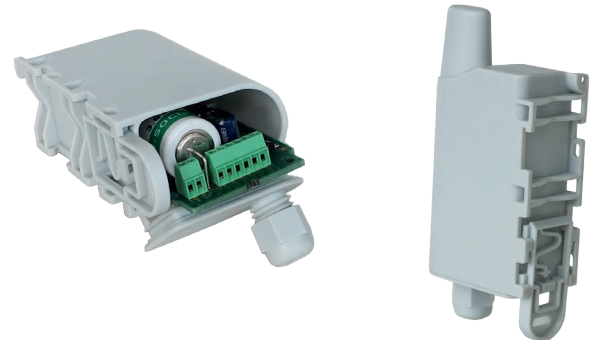


Machines states
Alerts reports
....



Highlights

- Ready to use transceiver
- sigfox, LoRaWAN & WMBUS versions
- Dry contacts
- Up to 4 configurable digital inputs/outputs
- Transmission: periodic or on event
- Interchangeable or soldered battery (up to 10 years)
- IP67 (IP68 on demand)



Networks



Performances

sigfox, LoRa: up to 15km
WMBus: up to 1km

Warnings

Battery end of life

Compatibility

Dry contact sensor

General information

Operating temperature: -20°C / +75°C
Integrated fixation systems: DIN-Rail, tube, wall, necklace
Dimensions: 105 x 50 x 27 mm
Weight: 80g
Housing: IP67 (IP68 on demand)
Standards: EN 300 220, EN 301 489,
EN 60950

ADEUNIS RF

283 rue Louis Néel - Parc Technologique Pré Roux
38920 CROLLES - France
Tel.: +33 (0)4 76 92 07 77 - Fax: +33 (0)4 76 04 80 87
www.adeunis-rf.com - arf@adeunis-rf.com

